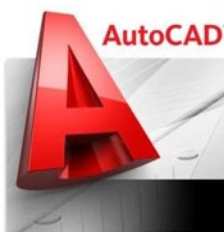




Bridge and Commercial Steel
www.steelteku.com
6440 Flying Cloud Drive Suite 145
Eden Prairie, MN 55344
jbettin@steelteku.com
612-258-7531

Capabilities Brochure 2018

We use the latest 2D and 3D technology to provide quality on-time structural and miscellaneous steel shop drawings and consulting.





John E Bettin

QUALIFICATIONS

- Familiar with specifications such as AISC, IBC, AWS, AASHTO, SSPC, AREA, OSHA and multiple State Bridge Construction Specifications.
- 12+ years management along with over 25yrs steel detailing and field survey experience.
- Tekla Structures, Advanced Steel, AutoCAD, SSDCP, AutoS, Ficep Machines, Steel Projects, Soft scan, Fabtrol, Fab-Suite, Microsoft ~ Word, Excel, Access, Projects.

EMPLOYMENT SUMMARY

Steel Tek Unlimited, Eden Prairie, MN

CEO/Project Manager, 2016 – Present

Partnered in starting Steel Tek Unlimited offering steel detailing and software development for miscellaneous bridge, industrial and commercial steel products for customers around the world

JB Detailing Services, Waconia MN

Division Manager, 2010-2016

- Started a division of the Gibraltar Industries offering steel detailing for miscellaneous bridge, industrial and commercial steel products for customers around the country.

Standard Iron and Wire Works, Monticello MN

Chief Draftsman, 2008-2010

- Directly managed and scheduled drafting department dedicated to creating accurate shop drawings for fabrication of steel used in high profile industrial/commercial projects and contract manufacturing.

The D.S. Brown Company, Chaska MN Operations

Engineering Supervisor, 2004-2008

- Directly supervised and scheduled an engineering department dedicated to creating accurate shop drawings for fabrication of miscellaneous steel bridge products.

The D.S. Brown Company, Chaska MN Operations

Lead Steel Detailer / Checker, 1996-2004

- Managed detailing projects, which involved checking of layouts, calculations and drawings of other detailers.

Posi Pak Corporation, Brooklyn Center, MN

Product Designer, 1995-1996

Designed effective shipping products and techniques for mass-production.

EDUCATION AND TRAINING

Fergus Falls Community College - AAS Degree
Minneapolis Drafting School – Steel Detailing and AutoCAD Training
Rockhurst University Education Center – MS ACCESS Training
Hennepin Technical College - Tekla Coursework Development
ITT Technical Institute – Advisory Board Drafting and Design
Graitec Advanced Steel - Certified Training 8.1



Eric W Torola

QUALIFICATIONS

Familiar with specifications such as AISC, IBC, AWS, SSPC, OSHA and commercial and industrial fabrication.
20+ yrs management and over 40 yrs steel detailing and field survey experience
Programming languages: C, C++, C#, VB, VB.Net, SQL, HTML, XML, Fortran, Pascal, Java
CAD applications: AutoCAD, Inventor, Cadmax, Vectorworks, Tekla Structures, Advance Steel, SDS2, Pro/E, MS Office, MS Projects, Visio, FabSuite

EMPLOYMENT SUMMARY

Steel Tek Unlimited LLC, Dassel, MN

CTO, 2016 - Present

Cofounder and CTO managing programming division. Responsible for developing modelling automation programs for customers and retail.

EWT Consulting, Inc, Dassel, MN

CEO, 2015-2016

Created over 25 customized plugins and applications for automating drafting processes for various customers. Created, supported and marketed stair plugins for Tekla.

Standard Iron Works, Monticello, MN

CAD System Administrator, 2008-2015

Identified and improved all drafting processes, documented and insured that drafting room was compliant with AISC standards and compliance. Created customized plugins and applications for checking quality of models and automation of drafting process; and trained and supported all project managers and drafting personnel on the use of the applications.

EWT Consulting, Inc, Dassel, MN

CEO, 2001-2008

Oversaw all drafting, modelling and technology while completing many modeling projects for commercial construction.

Hutchinson Technology, Inc, Hutchinson, MN

Programmer, 1999-2001

Supported engineers and CAD drafters with Pro/E and ERP system integration.

EDUCATION AND TRAINING

College of Lake County – Pre-engineering courses and programming
Anoka Hennepin Community College – Communications courses, MS NT Administration
Professional training – basic, intermediate and advanced Java courses; UML for Object-Oriented Analysis and Design
Tekla – Tekla Structures Advanced Training
Design Data – SDS2 Training



Jeff Klein

QUALIFICATIONS

Familiar with specifications such as AISC, IBC, AWS, AASHTO, SSPC, AREA, OSHA and multiple State Bridge Construction Specifications.

Over 25yrs steel detailing and field survey experience.

Tekla Structures, SDS2, AutoCAD, SSDCP, Fabtrol, Fab-Suite, Microsoft ~ Word, Excel, Access, Projects.

EMPLOYMENT SUMMARY

Steel Tek, Unlimited, Eden Prairie, MN

Lead Drafter/Checker, 2017-Present

Manages detailing projects, which involves checking of layouts, calculations and drawings of other detailers.

Briese Ironworks, Rochester, MN

Drafter 2010-2017

Detailed all types and sizes of commercial buildings using SDS2.

Ideal Steel Detailing, LLC, Apache Junction, AZ

Detailer 2003 – 2010

Received contract drawings from employer and returned detailed erection and shop drawings via email.

Detailed miscellaneous structural steel shop and field erection drawings using AUTOCAD. drawings.

Able Steel Fabricators, Inc., Mesa, AZ

Detailing Engineer 1983-2003

Specialized in structural steel drafting ranging from small to large commercial buildings.

Located and detailed masonry embeds, stairs and handrails, roof ladders, columns and beams, roof deck layout, trash gates and other miscellaneous steel.

Periodically checked detailing work of other drafters for accuracy.

Trained employees in AUTO-CAD.

EDUCATION AND TRAINING

Design Data - SDS2 Training

Universal Technical Institute (UTI) - Associate of Occupational Studies Degree in Computer Aided

Drafting Technology



Sarah L Burandt

QUALIFICATIONS

Familiar with specifications such as AISC, IBC, AWS, AASHTO, SSPC, AREA, OSHA and multiple State Bridge Construction Specifications.
Over 20yrs steel detailing and field survey experience.
Tekla Structures, AutoCAD, Microsoft ~ Word, Excel, Access, Projects.

EMPLOYMENT SUMMARY

Steel Tek Unlimited, Eden Prairie, MN

Structural Drafter, 2017-Present

Details complex projects for bridge and commercial constructions while checking layouts and calculations of other detailers.

Self-Employed, Waconia, MN

Structural Drafter, 2007-2017

Independent contractor for DS Brown Company and Steel Tek Unlimited.

DS Brown Company (Lewis Engineering Division), Chaska, MN

Structural Drafter, 2000-2007

Created detailed shop drawings while working closely with the shop on torch and beamline projects.

TC/American Crane Company, Elk River, MN

Layout Drafter, 1995-2000

Devised and detailed overhead crane and monorail systems using AUTOCAD, engineered orders with standardized and customized components and assisted engineers with design and detailing of specialized materials handling systems.

Dacon Engineering, Minneapolis, MN

Detail Drafter, 1995-1995

Contract at TC/American Crane Company

Hennepin Technical College, Eden Prairie, MN

Assistant to Instructor, 1994-1995

Coordinated detailing of welded equipment frame drawings with AUTOCAD and implemented AUTOCAD programs to create intricate electrical ladder diagrams while supervising and mentoring students in mechanical drafting.

EDUCATION AND TRAINING

Hennepin Technical College – Mechanical Drafting and Design Diploma



Mark Woodford

QUALIFICATIONS

C, Java, C#, .NET, Azure, T-SQL, Database Design, MVC WebApp Development, JS, HTML, CSS

EMPLOYMENT SUMMARY

Steel Tek Unlimited, Houghton, MI

Lead Programmer/Analyst, 2018-Present

Lead software architect and programmer for our Framework and SDK for creating Tekla plugins.

MCIS, Marshfield, WI

Programmer/Analyst, 2016-2018

Developed service-side components of Marshfield Clinic's EHR in C#, designed database tables and stored procedures in T-SQL and managed resources on Microsoft Azure.

MCIS, Marshfield, WI

Programmer/Analyst Intern, June 2015 - Sep. 2015

Developed a Windows application to push test data into test instances of the Clinic's EHR and used WPF/XAML to create a GUI, C# for the application logic, and T-SQL for storing the test data.

MTU/NSF, Houghton, MI –

Web App Developer, 2014 - 2016

Developed a citizen science web application to collect data on fungi for the Forestry Dept. as part of an NSF funded project and used the Grails web app framework and MySQL while creating the client-side views with JS/Ajax requests to server.

MTU, Houghton, MI

Research Assistant, 2011 - 2011

Analyzed ball milled metallic powders as a research assistant with the materials Science Dept. using images collected from an electron microscope

EDUCATION AND TRAINING

Michigan Tech University – B.S. in Computer Science, Concentration in Software Engineering

Michigan Tech University – Courses in Mechanical Engineering



Andrew Nickel

QUALIFICATIONS

Familiar with specifications such as AISC, IBC, AWS, AASHTO, SSPC, AREA, OSHA and multiple State Bridge Construction Specifications.
Solidworks, Tekla Structures, AutoCAD, AutoDesk Revit
Microsoft ~ Word, Excel, Access, Projects.

EMPLOYMENT SUMMARY

Steel Tek Unlimited, Eden Prairie, MN
Drafter, 2018-Present

Joe Kodada Construction, MN
Crew Member, 2016-2017
Roofing, sheet rocking, siding and various home construction projects.

Rich Meiers Landscaping, Lancaster, CA
Crew Member, 2016-2016
Maintained city parks while providing lawn maintenance for residential clients and performing mechanical maintenance.

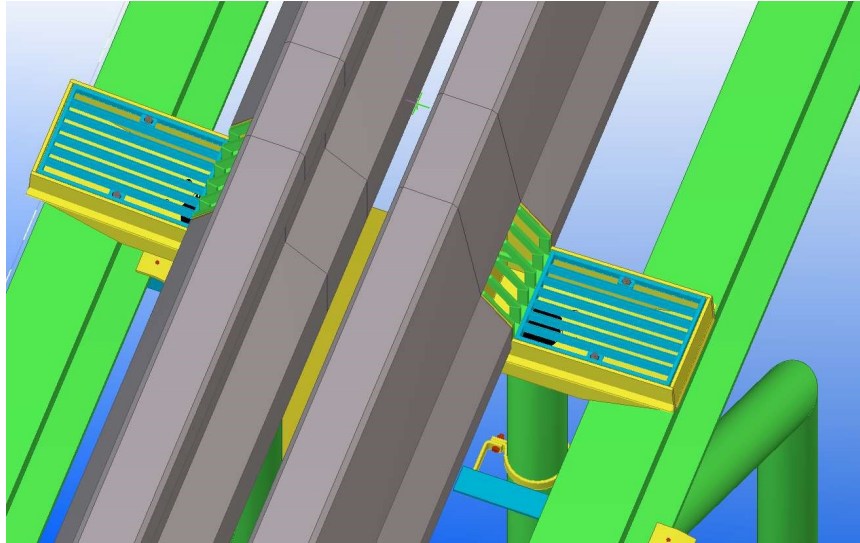
Central Lawn Pros, New Hope, MN
Landscaping contractor, 2015-2015
Designed and constructed patios, outdoor fireplaces, ponds and other landscape features while marketing services.

Husker Outdoors, Inc, Jordan, MN
Crew Member, 2014-2015
Laborer in constructing landscaping for large residential communities; maintained and created upscale lawns/landscapes; installed and repaired irrigation systems while marketing for company.

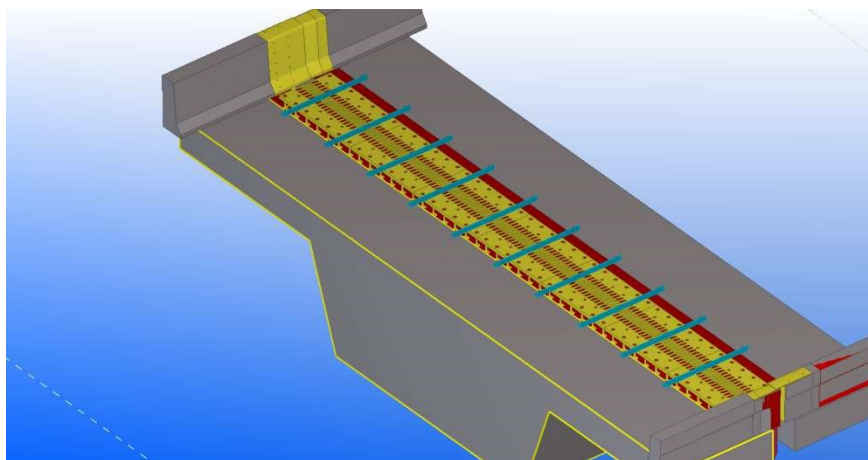
EDUCATION AND TRAINING

Hennepin Technical College – Engineering CAD Technology AAS expected May 2019

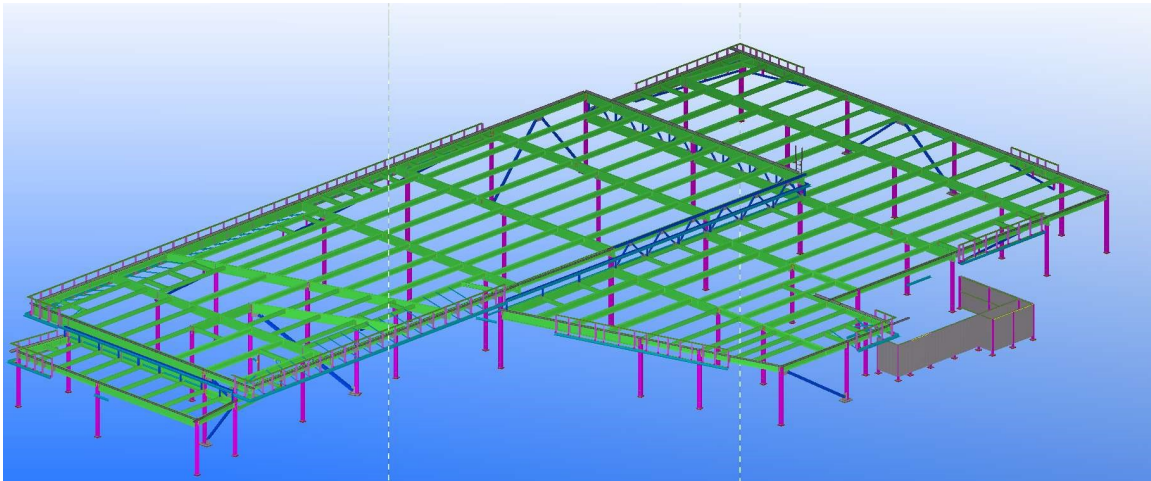
Scuppers and Downspouting



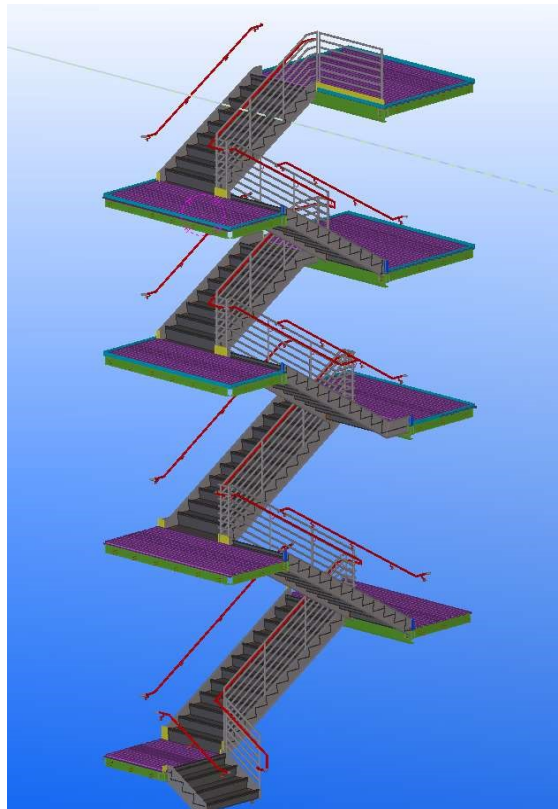
Finger Expansion Joints



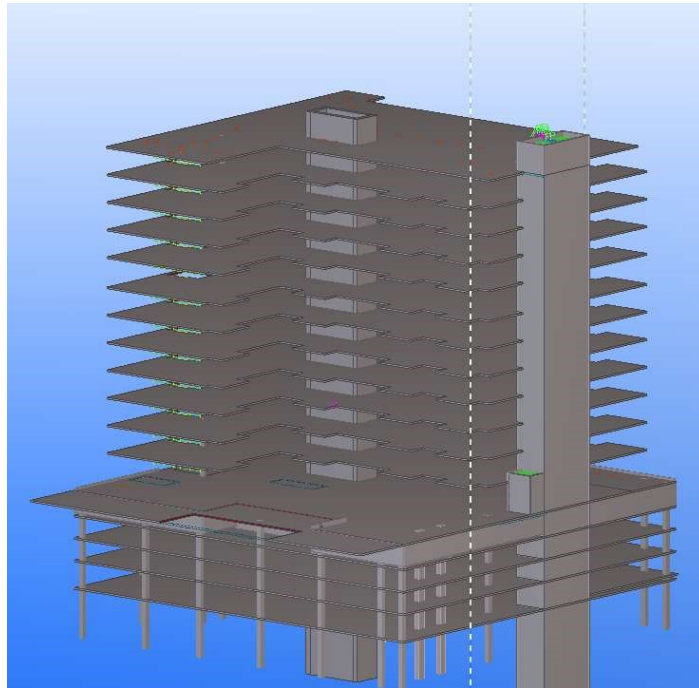
Structural Steel



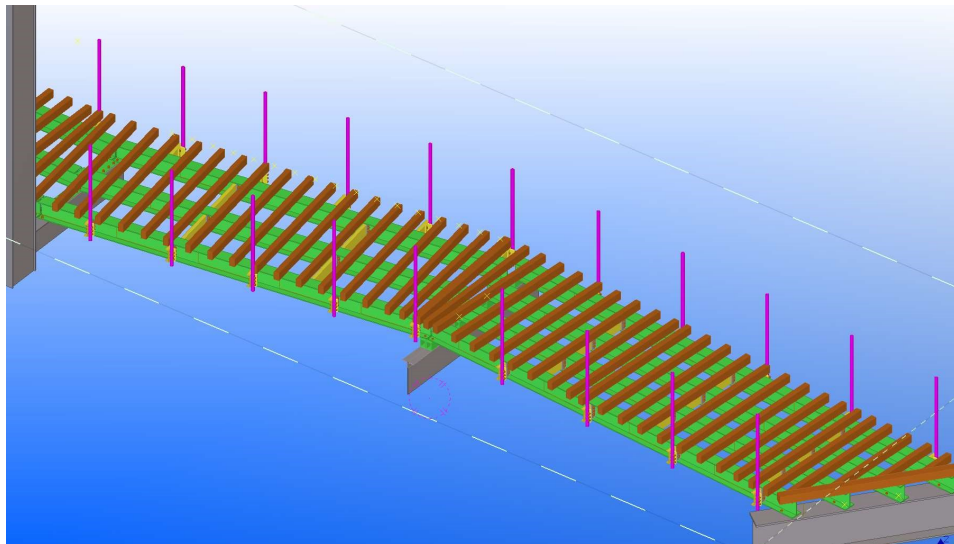
Custom Stair Towers and Railing

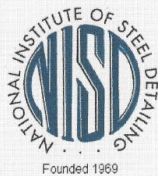


Large Embed Projects



Bridge Structural





National Institute of Steel Detailing

hereby names

STEEL TEK UNLIMITED

as a member in good standing

for the year

FEB 2017 thru May 2019

President: Joel Hicks

Secretary: Glenn Ihde, P.E.

- *Unlocking the potential of the steel fabrication Industry.*

